



This city of Fresno is the fifth largest city in California and the largest inland city in California. Having a total area of 112 square miles, Fresno is a major gateway for Yosemite visitors. The city also serves as a major entrance into Sierra National Forest and Sequoia National Park. The county of Fresno was formed in 1865 after the California gold rush. The name Fresno means 'ash tree' in Spanish as there were an abundant amount of ash trees lining the San Joaquin River. An ash leaf is featured on the city's flag.



LIVING FRESNO

Housing Resources

With so many housing arrangements to consider, searching for a safe environment is key. The hotel, apartment and internet suggestions have been utilized by our RNs and Vendors numerous times. These locations are known to be in safe areas and offer an easy commute



Tip: Search with relevant key words, "corporate housing", and "short term rental", "vacation rental," and "corporate hotel" as examples. As these words will be necessary to find the information you are looking for, surround them with quotation marks so the search engine knows to look for the specific words in the order you typed.

Internet Searching

When scouring the internet, please do not be fooled by embellished advertisements that tout low starting rents. Ideally, work with websites where you can interact directly with the owner or landlord in advance. Most are free and some offer membership plans. A few recommended Online portals are:



www.furnishedfinder.com

www.airbnb.com

www.vrbo.com

Housing Recommendations

There are quite a few neighborhoods within the city of Fresno. The neighborhood of Sunnyside is centered near historic buildings; The Tower District is a hub for live theater and early twentieth century architecture; Huntington Blvd. District is home to stately homes; Van Ness is considered the most prestigious neighborhood; West Side is one of the oldest neighborhoods dating back to the 1930s, and Downtown is currently going thru extensive redevelopment. We have hotel and apartment suggestions that cover most of these unique neighborhoods of Fresno.

HOTEL REFERENCES

Extended Stay America-Fresno –North

www.ExtendedStayAmerica.com

7135 N. Fresno Street

Fresno, CA 93720

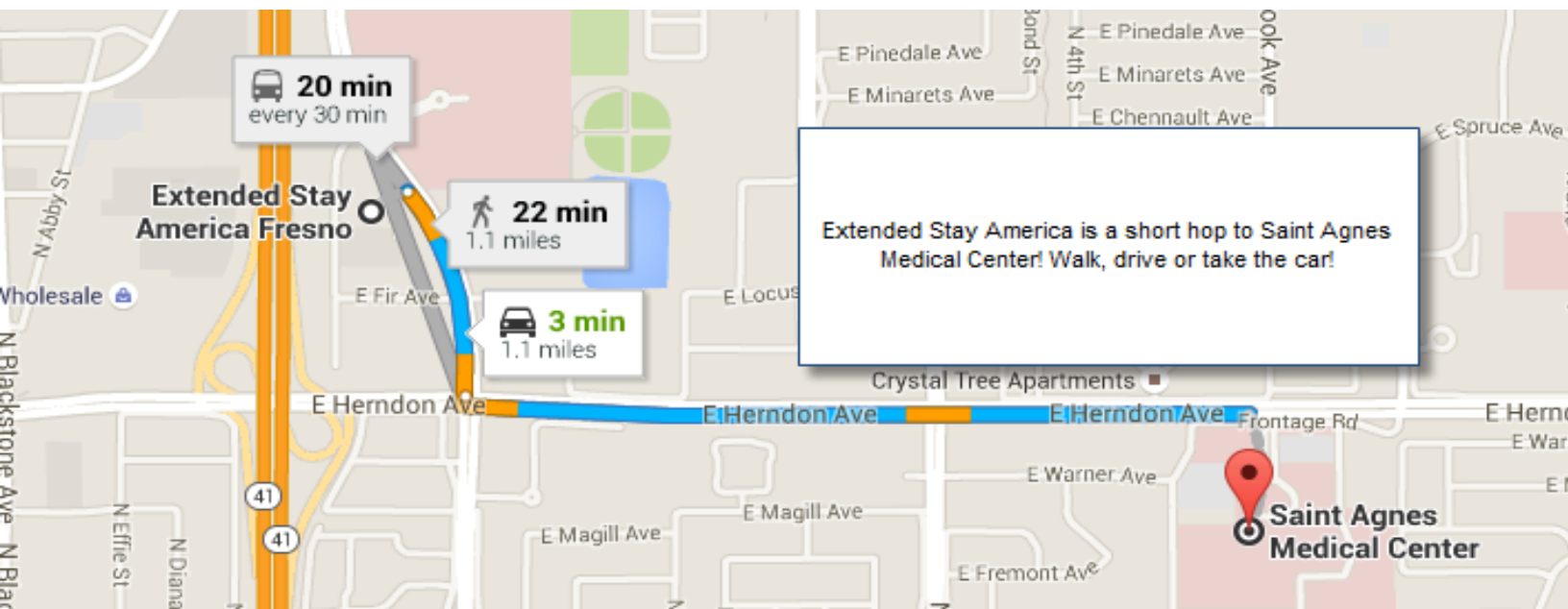
559-438-7105

Amenities Include:

- Free Wi-Fi
- Full Kitchen w/dining and cooking utensils
- Laundry on-site
- Breakfast
- Tax info: 13%-taxes fall off after 31 nights



Tip: Please use our Corporate Code: **"emrld"** when booking to capture a discounted rate.



Americas Best Value Inn Convention Center Downtown

www.americasbestvalueinnfresno.com

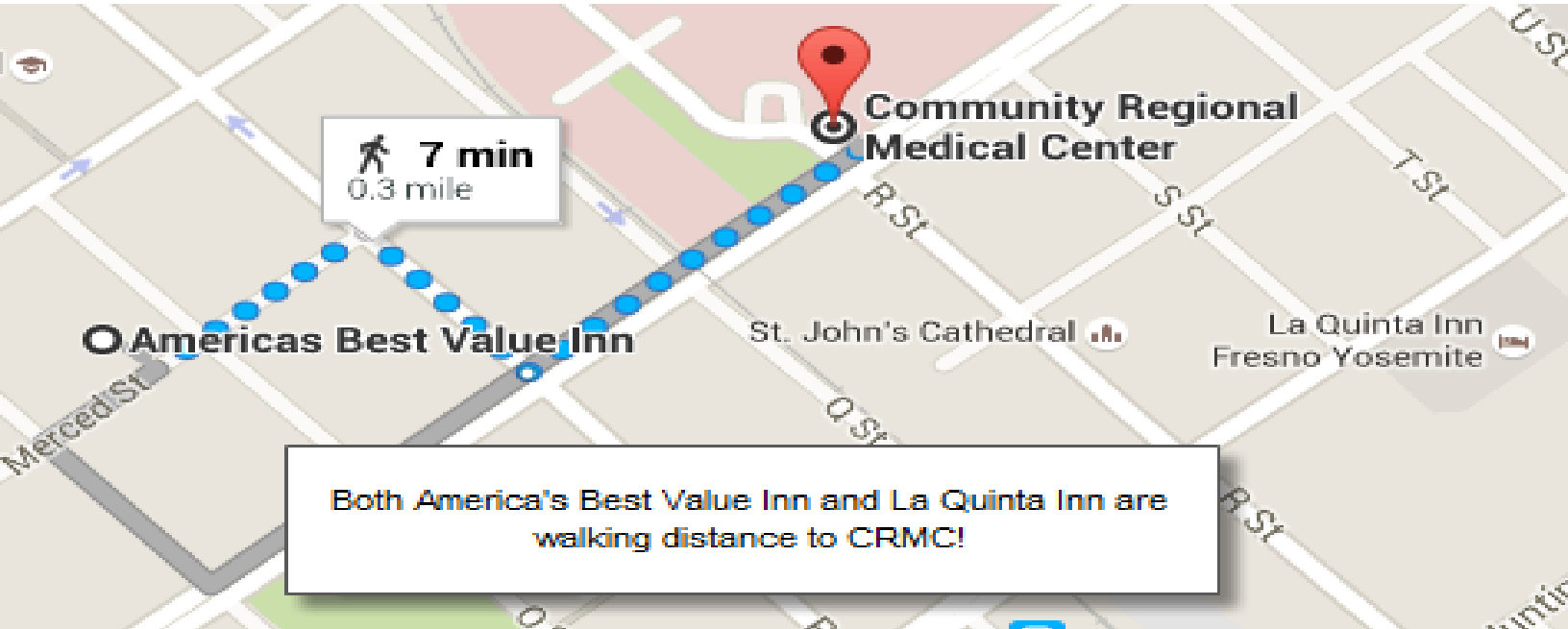
2425 Merced Street

Fresno, CA 93721

559-233-4896

Amenities Include:

- Free Wi-Fi
- Refrigerator and Microwave in room
- Fitness Center
- Laundry on-site



La Quinta Inn

www.laquintafresnoyosemite.com

2926 Tulare

Fresno, CA 93721-1440

559-442-1110

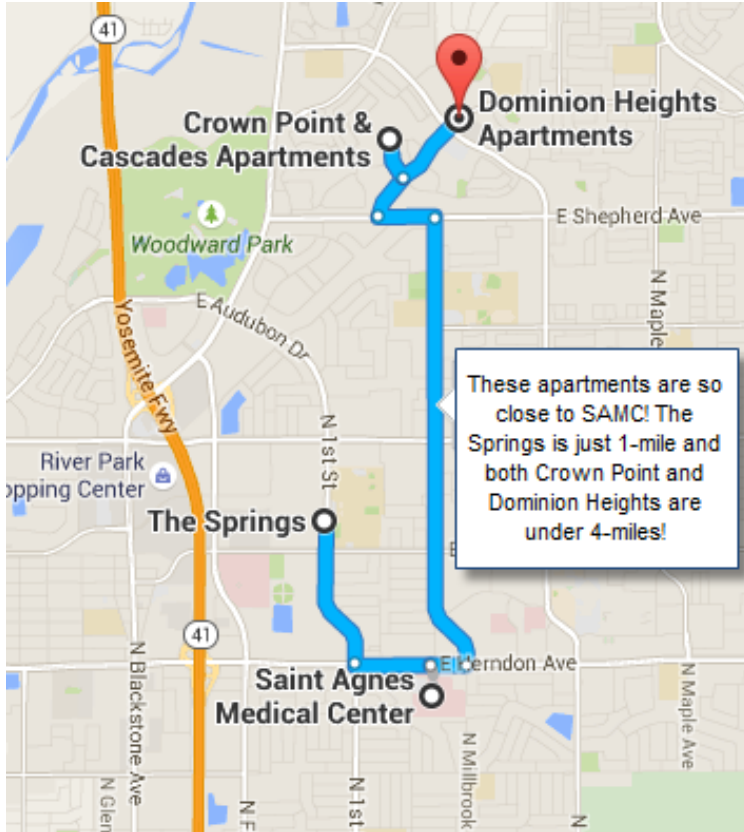
Amenities Include:

- Free High-Speed internet Access
- Microwave and Mini Refrigerator
- "Plug and Play" TV feature
- Fitness Center
- Outdoor swimming pool
- Breakfast





APARTMENT REFERENCES



The Springs Apartments

www.springsapts.com

7511 N. 1st St.

Fresno, CA 93720

559-439-1076

Amenities Include:

- 2 & 3 bedroom floor-plans
- Flexible lease terms
- AC
- Washer & Dryer hook-ups
- Garages
- Fitness Center
- Swimming Pool
- Pets allowed [select breeds]

Crown Pointe & Cascades Apartments

www.crownpointapts.net

9375 N. Saybrook Dr.

Fresno, CA 93720

855-536-3829

Amenities Include:

- 1 & 2 bedroom floor-plans
- Central Air and Heat
- Full size Washer & Dryer
- Attached single car garage
- Fitness Center
- 3-swimming pools
- Lighted tennis court
- Running paths
- Pets allowed [Breed restrictions apply]



Dominion Heights Apartments

www.dominionheightspts.net

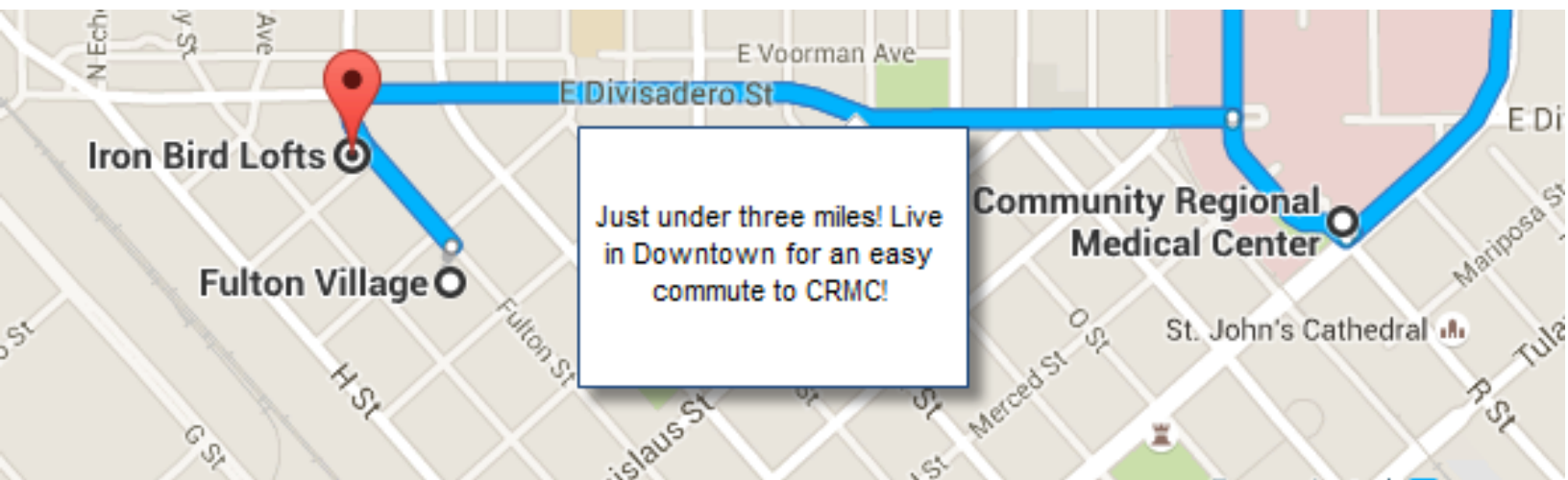
1164 E. Perrin Ave.

Fresno, CA 93720

844-265-1981

Amenities Include:

- 1, 2 & 3 bedroom floor-plans
- Washer/Dryer and Microwave
- Gated community
- 24-hour fitness center
- Sparkling pool and spa
- Walking distance to shopping and dining
- Pets allowed [2-pets per apartment]



Fulton Village

www.gvurban.com/fulton-village

1759 Fulton Street

Fresno, CA 93721

559-486-3000

Amenities Include:

- Studio, 1 & 2 bedroom floorplans
- Urban architecture
- Washer/Dryer hook-ups [rentable appliance options]
- Gated community with on-site parking
- Pet friendly with designated doggy potty area



Iron Bird Lofts

www.rentgranville.com/property/iron-bird-lofts/2

1901 Fulton St.
Fresno, CA 93721
559-412-7558

Amenities Include:

1 & 2 bedroom lofts-loft layout
Air Conditioning
Washer/Dryer hook-up
Controlled gate access
Parking Garage/Lounge/Inquire about pet policy



TRAVELING FRESNO

Fresno Area Express – FAX

<http://www.fresno.gov/DiscoverFresno/PublicTransportation/default.htm>

FAX services the greater Fresno Metropolitan Area with a modern and green fleet of over 100 buses. Routes, schedules and maps can be found on the website. Fares and passes can be purchased at various Pass Outlets, the Manchester Transit Center or by mail.

Rental Car

Fresno Yosemite International Airport is quite a busy airport. 9-passenger airlines fly in and out. If you are flying into Fresno and need a rental car for your assignment, you will have an opportunity to lease at the in-Terminal Car Rental Counters. Booking ahead is highly recommended. Please check out these companies that offer a discount by utilizing Emerald Health Services corporate code.



Tip: As renting a car at the airport is the most convenient option, many times you can capture better rates at the off-airport locations.



800-527-0700
www.budget.com
Discount Code:
U343028



800-593-0505
www.enterprise.com
Discount Code:
32C4388.
PIN: 'EME'



800-654-8216
www.hertz.com
Discount code: **1608528.**



800-CAR RENT
www.nationalcar.com
Contract ID: **GCAMA032**
www.nationalcar.com/offer/GCAMA032



800-327-7607
www.thrifty.com
Corporate Account **00102**



EXPLORING FRESNO

Fresno offers numerous attractions and activities all year. Whether you want to spend the day at Chaffee Zoo, head to the mall for a new pair of shoes, or drive to Yosemite National Park for a day hike, there is always something to do on your day off.



NATIONAL PARKS



Yosemite National Park

<http://www.nps.gov/yose/index.htm>

This breathtaking park is known for its waterfalls, Half Dome and 1200 square miles of deep valleys, grand meadows, and ancient sequoias. This October 1, 2015 the park will commemorate the 125th anniversary of establishment of Yosemite National Park. Check the website for events throughout the year! Entrance fees per non-commercial car is \$30. Annual passes and other passes are available on-line. Entrance fees will be waived on certain days of the year. Visit the website for the list of free entrance days.

★ MUST SEE

The Ahwahnee Hotel.

<http://www.yosemitepark.com/the-ahwahnee.aspx>

1 Ahwahnee Drive
Yosemite National Park, CA 95389
801-559-4884

The Ahwahnee Hotel is an historic destination. The site of the hotel has stunning views of Yosemite's icons – Half Dome, Yosemite Falls and Glacier Point. Built in 1925, this major attraction offers guided tours throughout the year. It is highly suggested you make reservations.





Sequoia and Kings Canyon

<http://www.nps.gov/seki/index.htm>

These two parks lie side by side in southern Sierra Nevada, east of the San Joaquin Valley. Here you will see the world's largest trees. Due to the wide range of elevations and weather' road conditions are affected. Check operating hours for the season you plan to visit.



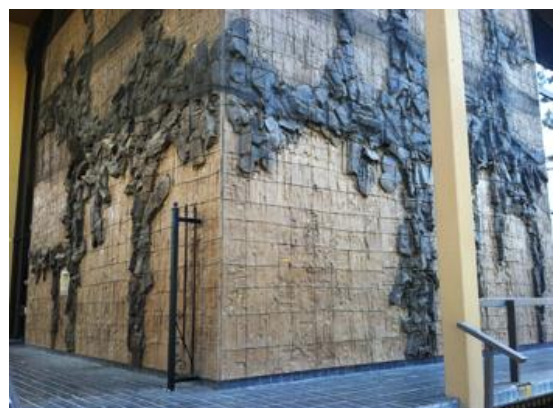
ATTRACTIONS & EVENTS



Downtown Fresno

<http://www.downtownfresno.org/>

It is highly recommended you take a walking tour of Downtown Fresno and discover the numerous public art collection that reflects the history of Fresno. You will discover beautiful ceramic treatments as architectural elements





Fresno Chaffee Zoo

894 West Belmont Ave.
Fresno, CA 93728

www.fresnochaffeezoo.com

The zoo was formed in the early 1900s and its current size is 18 acres. This fall a brand new African Adventure will double the size of the zoo and include large animal exhibits such as lions, breeding elephants, cheetahs, hippos, and more!

Farmer's Market



Every Wednesday at Kern Street [between M and N Streets] purchase farmer and artisan prepared food and produce. The market runs between May and October.



For more recommendations & information about Fresno and your upcoming travel assignment contact our Manager of Nurse Concierge Services & Corporate Housing:

Nora Adams | (800) 917 -5055, ext. 109 | nadams@emeraldhs.com | <http://www.emeraldhs.com>